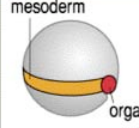

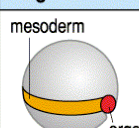

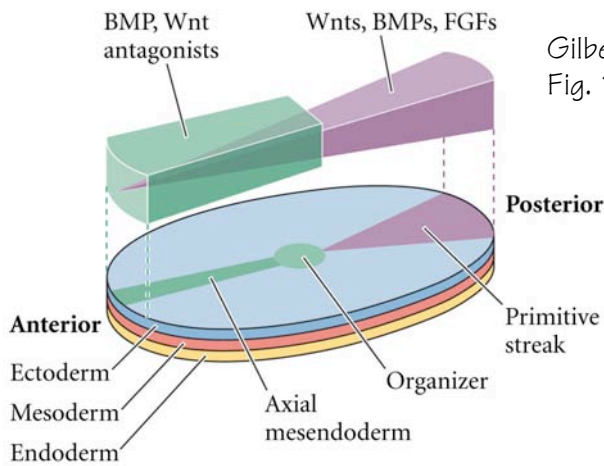


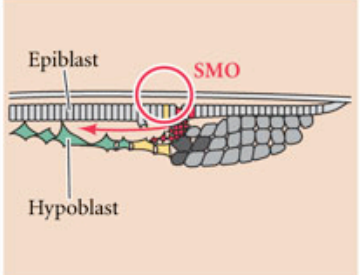

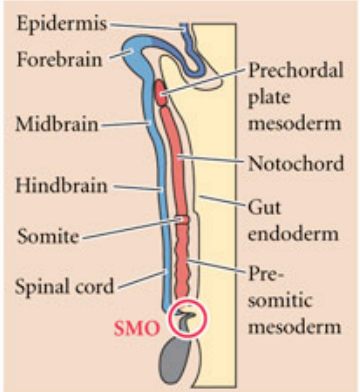
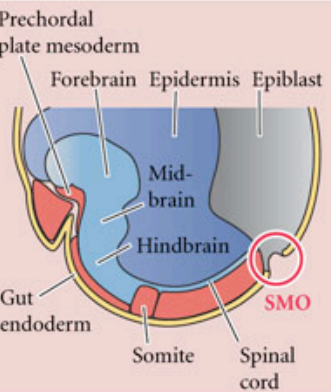
Wolpert et al, 2e, Fig. 4.18

	<i>Xenopus</i> gastrula	Mouse gastrula
		
	<b>Genes in organizer region</b>	
<b>Genes encoding transcription factors</b>	<i>Brachyury</i>	<i>Brachyury</i>
	<i>goosecoid</i>	<i>goosecoid</i>
	<i>Pintallavis</i>	<i>Hnf-3<math>\beta</math></i>
	<i>Xlim-1</i>	<i>Lim-1</i>
		
	<b>Genes in organizer region</b>	
<b>Genes encoding secreted proteins</b>	<i>Xnr-3</i>	<i>Nodal</i>
	<i>chordin, Xnot2, noggin, Shh,</i>	<i>Shh</i>
	<i>Cerberus</i>	<i>Cerberus-related</i>

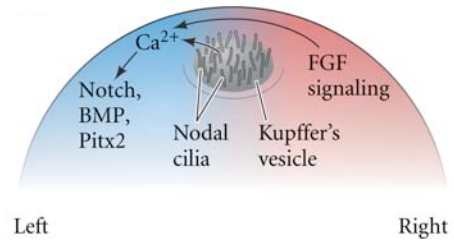
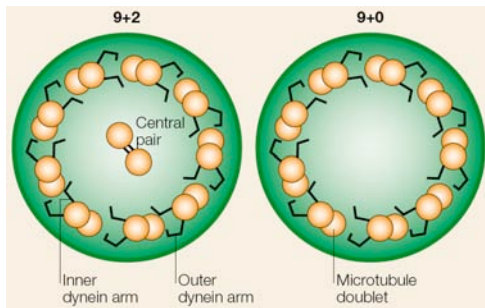
Gilbert, 8e, Fig. 11.41



Gilbert, 8e, Fig. 11.49

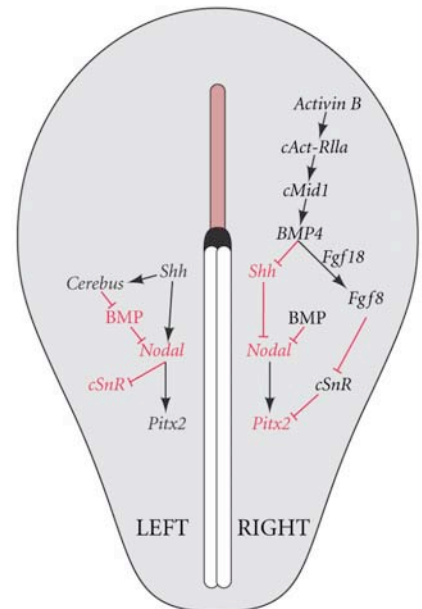
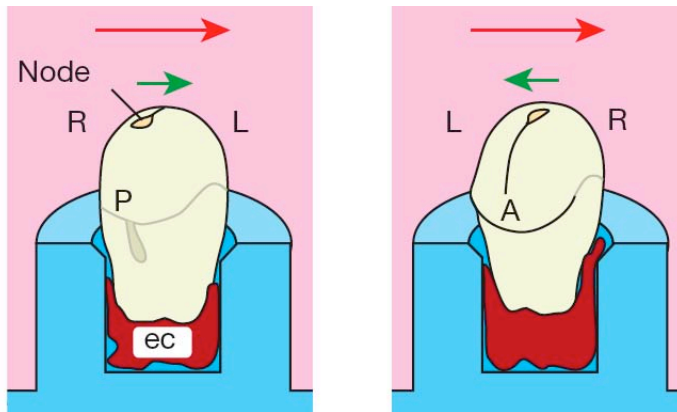
STAGE	Chicken <i>Gallus gallus</i>	Mouse <i>Mus musculus</i>
<b>Early gastrula</b>		
<b>Late gastrula</b>		

# Left/Right Axis Specification in Vertebrates

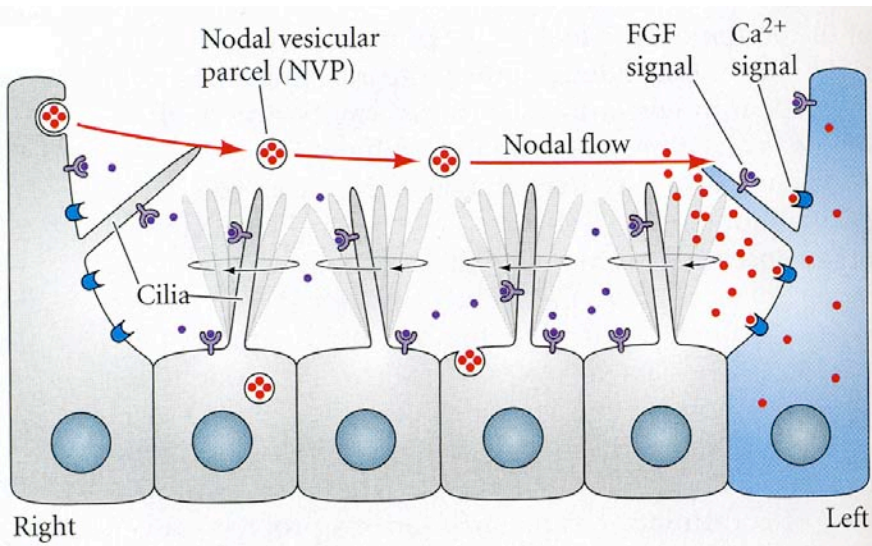


Hamada et al (2002). Nat Rev Mol Bio 3:103-113

Nonaka et al (2002). Nature 418:96-99



Gilbert, 8e, Fig. 11.26



Gilbert 8e, Fig. 11.48