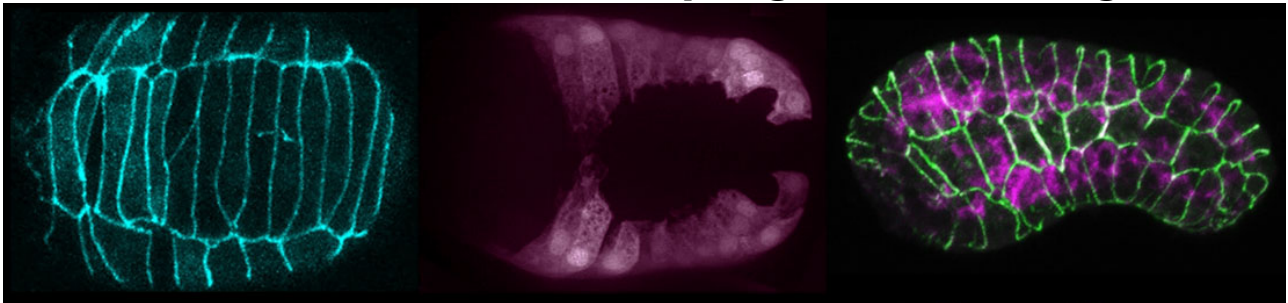




## Postdoctoral Position

### Cellular Mechanisms of Morphogenesis in *C. elegans*



#### Jeff Hardin Laboratory • Department of Integrative Biology University of Wisconsin-Madison

We are seeking highly motivated, creative researchers to join our research team to elucidate the roles of **cadherin-dependent cell-cell adhesion** and **directed cell migration** during epidermal morphogenesis in the *C. elegans* embryo. Our NIH-funded research uses an “Angstroms to embryos” approach that combines structural biology and biochemistry, genetics, single-molecule biophysics, and high-resolution in vivo imaging to study the cadherin complex during embryogenesis. We also study a conserved Rac- and RhoG-dependent pathway that regulates how epithelial cells rearrange. Our work has implications for understanding common human birth defects and cancer.

Strong candidates should have a Ph.D. degree (or equivalent) and experience in genetics, cell biology, biochemistry, developmental biology, advanced microscopy, or related fields. This position is open, starting **August 1, 2017**. Motivated applicants are encouraged to submit a cover letter, curriculum vitae and the names of three references directly to Dr. Jeff Hardin at [jdhardin@wisc.edu](mailto:jdhardin@wisc.edu). For more information see <https://worms.zoology.wisc.edu>

Located in the heart of the vibrant city of Madison, known for its high quality of life, the University of Wisconsin is one the nation’s premier research universities with a rich tradition in *C. elegans* biology. UW is an equal opportunity employer.

